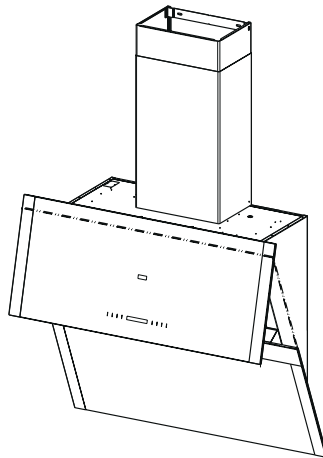


DD9996-B

Cooker Hood

Operating and Installation Instructions



PERFEKT IN FORM UND FUNKTION

AEG
Electrolux

Thank you for buying an AEG product.

To enable you to use your appliance effectively and safely, please read this instruction book carefully before using the appliance and retain for future reference. If you require guidance in the use of the appliance or require further information on AEG Products, please contact our Customer Services Department. For general enquiries concerning your AEG appliance or for further information, visit our website at <http://www.aeg.co.uk>

Customer Services Department
Major Appliances
AEG
Addington Way
Luton
Bedfordshire
LU4 9QQ

Tel: 08705 350 350(*)

* calls to this number may be recorded for training purposes.

For the User

Important Safety Information

Your Appliance

Operating Instructions

Cooker Hood Controls

To Operate

Recirculation

Extraction

Maintenance and Cleaning

External Cleaning

Metal Grease Filter

To Remove the Grease Filter Cassette

Charcoal Filter

To Remove/Replace the Charcoal Filter

Worktop Lighting

Replacing the Light Bulb

Something Not Working

Service and Spare Parts

Guarantee Conditions

For the Installer

Installation Instructions

Technical Information

Electrical Connections

Electrical Requirements

Electrical Connection

Installing the Cooker Hood

Installation Requirements

Unpacking

Clearance Height

Wall drilling and bracket fixing

Hood body mounting

Drilling the Shelves

Chimney assembly

Top Shelf

Electrical Connection and Working Test

Guide to use the instruction book

The following Symbols will be found in the text to guide you through the instruction book



Safety instructions



Step by step instructions

IMPORTANT SAFETY INFORMATION

These warnings are provided in the interests of your safety. Ensure that you understand them all before installing or using this appliance. Your safety is of paramount importance. If you are unsure about any of the meanings of these warnings contact the Customer Services Department.

■ Installation

- Any installation work must be undertaken by a qualified electrician or competent person.
- This hood must be installed in accordance with the installation instructions and all measurements adhered to.
- If the cooker hood is installed for use above a gas appliance then the provision for ventilation must be in accordance with the Gas Safety Code of Practice BS.6172, BS.5440 and BS.6891 (natural gas) and BS.5482 (LP gas) 1994, the Gas Safety (Installation & Use) Regulations, the Building Regulations issued by the Dept. of the Environment, the Building Standards (Scotland) (Consolidated) Regulations issued by the Scottish Development Department.
- The fan motor of the cooker hood incorporates a cut-out device, which will operate if the cooker hood is installed below the minimum height recommended in the Technical Information section, or if the motor becomes overheated. If the cut-out device is activated, switch off the motor and allow the hood to cool. The cut-out device will reset itself when the fan motor has cooled.
- It is dangerous to alter the specifications or modify this product in any way.
- When installed between adjoining wall cabinets, the cabinets must not overhang the hob.
- If the room where the hood is to be used contains a fuel burning appliance such as a central heating boiler then its flue must be of the room sealed or balanced flue type.
- If other types of flue or appliances are fitted ensure that there is an adequate supply of air to the room.
- When the hood is used in conjunction with appliances supplied with energy other than electricity, the negative pressure in the room must not exceed 0.04mbar to prevent fumes being drawn back into the room by the hood.
- The ducting system for this appliance must not be connected to any existing ventilation system which is being used for any other purpose.
- Do not install above a cooker with a high level grill.

■ Child Safety

- The appliance is designed to be operated by adults. Children should not be allowed to tamper with the controls or play with the appliance.

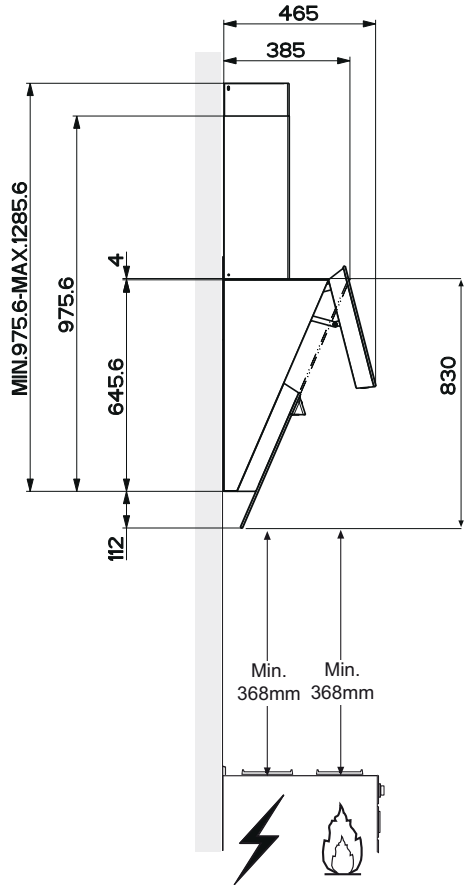
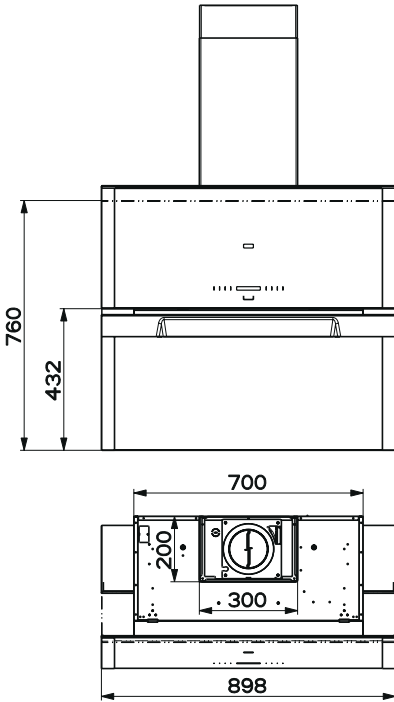
■ During Use

- This appliance is for domestic use only.
- Never leave frying pans unattended during use as over-heated fats and oils might catch fire.
- Never do flambé cooking under this cooker hood.
- Do not leave naked flames under this hood.

■ Maintenance and Service

- This appliance can be a fire hazard if the grease and charcoal filters are not cleaned or replaced as recommended.
- Under no circumstances should you attempt to repair the appliance yourself. Repairs carried out by inexperienced persons may cause injury or serious malfunctioning. Refer to your local Service Force Centre. Always insist on genuine spare parts.

YOUR APPLIANCE



OPERATING INSTRUCTIONS



Key	Function	Display
A	Upper panel closed: when pressed for about two seconds it opens the upper panel. It switches the motor on at the latest selected speed. Upper panel open: when shortly pressed it switches the motor and the lights on/off. It stops all function and closes the panel	Indicates the selected speed.
B	Decreases the suction speed.	Number of lit LEDs decreases.
C	Increases the suction speed.	Number of lit LEDs increases.
D	Functioning only when the upper panel is open. This speed has been timed at 10 minutes. After that time the system activates automatically the latest selected speed. The function is suitable for cooking conditions when vapours and smells are of the at most emission.	I flashes and all the LEDs on the display are lit. By pressing the key the function is deactivated.
E	Functioning only when the upper panel is open. By pressing this key it is possible to set up the motor to a suction speed at 100 m ³ /h .	24 -symbol appears and the LEDs on the display go off cyclically, one by one. By pressing the key the function is deactivated.
F	Functioning only when the motor is on. By pressing this key it is possible to set the delayed shutdown of the motor and the lighting to 30 minutes.	A flashing clock symbol appears. By pressing the key the function is deactivated.
G	By pressing this key for about 2 seconds it is possible to reset the filter saturation alarm.	A drop symbol indicates that the metal grease filters saturation alarm has been activated, and the filters need to be washed. The alarm is triggered after 100 working hours. C indicates that the charcoal filter saturation alarm has been activated, and the filter has to be replaced. The alarm is triggered after 200 working hours.
H	By pressing this key the intensity of the lighting system can be modified up to five levels.	
I	It switches the lights on and off (at maximum speed) in spite of the panel's position.	
L	Upper panel closed: when pressed for about two seconds it opens the upper panel . Upper panel open: when pressed for about two seconds it switches off motor and lights resetting every activated function, and closes the panel.	

Keyboard lock: it is possible to jam the keyboard when, for example, cleaning the glass. The motor and lights are switched off, and upper panel can be open or closed. By pressing the **D**-key for about 5 seconds the keyboard lock can be activated or deactivated. This function is confirmed by a Beep and by an animation on the display.

OPERATING INSTRUCTIONS

This cooker hood can be used to recirculate or extract contaminated air.

Recirculation Mode

The cooker hood is supplied specified for use in the recirculation mode with the charcoal filter fitted.

The contaminated air is cleaned by passing through the filters and then back into the kitchen.

The activated charcoal filter absorbs odours arising from cooking. In use it will slowly become saturated in grease and less effective. The filter normally requires changing after at least every three months or more frequently if the hood is used for more than three hours per day.

- Remove the chimney angle bracket.
- Screw the filter cover onto the air outlet, using four screws **12c** (2.9 x 12.5).
- Fix the air outlet grid **8** on the recirculation air outlet using the 2 screws **12d** (2,9 x 9,5) provided.

Extraction (Ducted)

The cooker hood is more effective when installed in the extraction mode (ducted to the outside).

Venting kits may be purchased through your retailer or DIY store, and must be evacuated through an outside vent of $\varnothing 125$ (5ins) or $\varnothing 150$ mm (6ins).

The ducting used must be manufactured from fire retardant material conforming to the relevant British Standard or DIN 4102-B1.

When the cooker hood is ducted to the outside the charcoal filter must be removed.

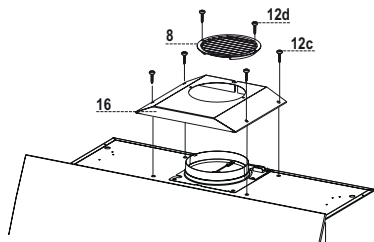
When installing the ducted version, connect the hood to the chimney using either a flexible or rigid pipe $\varnothing 150$ or 125mm, the choice of which is left to the installer.

To install a $\varnothing 150$

- Fix the pipe in position using sufficient pipe clamps (not supplied).

To install a $\varnothing 120$

- To install a $\varnothing 120$ mm air exhaust connection, insert the reducer flange **9** on the hood body outlet.
- Fix the pipe in position using sufficient pipe clamps (not supplied).
- Remove any activated charcoal filters.



Fitting the Ducting

- To install the Ducting Version of the hood, the optional Ducting chimney kit must be purchased.



Never do flambé cooking under this cooker hood.

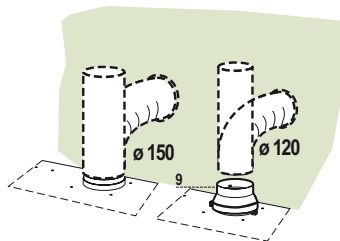
Take extra care when frying and never leave frying pans unattended during use, as overheated fats and oils can catch fire.

Do not leave naked flames under the cooker hood.

Ensure the hood is switched on before using the hob.

Ensure heating areas on your hob are covered with pots and pans when using the hob and cooker hood simultaneously.

Ensure not to damage the charcoal filter when cleaning or replacing as the activated charcoal inside is saturated with grease, which will stain if it comes into contact with clothing or furnishings.



MAINTENANCE AND CLEANING


 **Before carrying out any maintenance or leaning isolate the cooker hood from the mains supply.**

The cooker hood must be kept clean, as a build up of grease or fat can be a fire hazard.

External Cleaning

The metal casing, grille and chimney should be cleaned at least once a month to keep it looking like new. Wipe over the hood with a soft cloth wrung out in mild soapy water and then dry thoroughly.

Never use scouring pads or abrasive cleaners as they may scratch or damage the surfaces.

 *Always wear protective gloves when cleaning the hood.*

Never use scouring pads or abrasive cleaners.

Never use excessive amounts of water when cleaning particularly around the control panel.

Metal Grease Filters

Filters can be washed in the dish machine. They need to be washed when Drop-sign appears on the display or in any case every 2 months, or even more frequently in case of particularly intensive use of the hood.

To Remove the Grease Filter

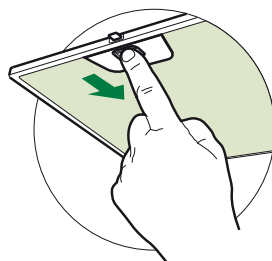
- Open the upper panel by pressing the A-key for few second (see Part USE).
- Remove the filters one by one pushing them towards the back side of the hood unit and simultaneously pulling downwards.

Alarm reset

- Press the G-key for at least 2 seconds.

Cleaning the filters

- Any kind of bending of the filters has to be avoided when washing them. Before fitting them again into the hood make sure that they are completely dry. (The colour of the filter surface may change throughout the time but this has no influence to the filter efficiency).
- When fitting the filters into the hood pay attention that they are mounted in correct position the handle facing outwards.



MAINTENANCE AND CLEANING

Alarm signal reset

- Stop the motor and switch off the lights.
- Press the G-key for at least 2 seconds.



Before carrying out any maintenance or cleaning isolate the cooker hood from the mains supply.

Charcoal Filters

In the recirculation mode the charcoal filters absorb smells and unwanted odours.

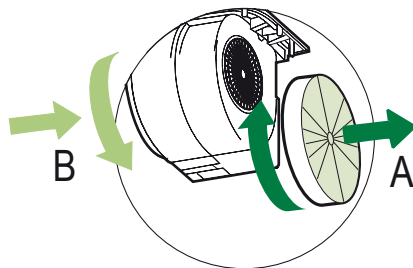
This filter cannot be washed or regenerated. It must be replaced when the C appears on the display or at least once every 4 months. The filter saturation alarm has to be activated already before.

Enabling/Disabling the alarm signal

- In the recycling version hoods the filter saturation alarm must be activated during the installation or later.
- Switch off the hood and the lights.
- Press the E-key for about 5 seconds until the last two segments of the motor LEDs are lit on the display.
- By releasing the E-key the clock icon starts to flash.
- Within 3 seconds press the D-key to activate/deactivate charcoal filter saturation alarm.
- C-symbol lit - charcoal filter saturation alarm **ACTIVATED**.
- C-symbol unlit - charcoal filter saturation alarm **DEACTIVATED**.

To Remove the Charcoal Filters

- Open the upper panel by pressing the A-key for few second (see Part USE).
- Remove the metal filters.
- Remove the saturated charcoal filter as indicated (A).
- Fit the new filters as indicated (B).
- Put the metal grease filters in their seats.

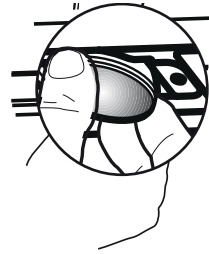



This appliance can be a possible fire hazard if the grease and charcoal filters are not cleaned and replaced as recommended.

MAINTENANCE AND CLEANING

Changing the Halogen Spot Lamp

- Extract the lamp from the lamp holder by pulling gently.
- Replace with another of the same type, making sure that the two pins are properly inserted in the lamp holder socket holes.

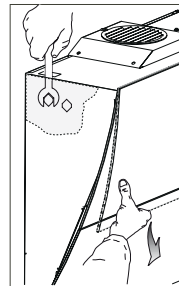
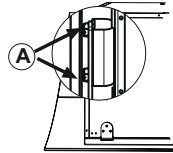
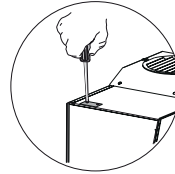


 Replacement filters and light bulbs can be obtained from your local Service Force Centre.

Replacing the fuser

The hood panel opening and closing mechanism is controlled by a starter motor which is activated by a fuser. This fuser works only on the starter motor. In case the fuser gets damaged when the panel is closed it is necessary to manually unblock the panel. In this case proceed as follows:

- Remove the cover placed up on the left side by the 2 screws.
- Unscrew the 2 hexagonal screws(A) by means of an appropriate tool to open the panel manually.
- After having completely opened the panel remove the metal grease filters, as explained in the part concerning the filter cleaning.
- The fuser is placed up on the right side. Turn the fuser holder as indicated. Replace the fuser with one having the same features.
- Open the panel by the control board (see par. **USE** button **L**) so the moving arm comes out, and you can screw again the 2 hexagonal screws(A) previously removed.
- Put the fuser holder and grease filters into their place again. Make sure that the hood functions correctly. In case the panel doesn't work correctly it is necessary to contact an authorized technician.
- Reassemble the cover placed up on the left side by the 2 screws previously removed.



If the fuser gets damaged being the panel open, it is sufficient to simply remove the grease filters and replace the fuser.

SOMETHING NOT WORKING

If, having followed these instructions carefully, your cooker hood fails to work properly please carry out the following checks.

Symptom	Solution
The cooker hood will not start	<ul style="list-style-type: none"> • Check the hood is connected to the electricity supply. • Check that the fan speed control is set to 1, 2 or 3.
The cooker hood is not working effectively	<ul style="list-style-type: none"> • The fan speed is set high enough for the task. • The grease filter is clean. • The kitchen is adequately vented to allow the entry of fresh air. • If set up for recirculation, check that the charcoal filter is still effective. • If set up for extraction, check that the ducting and outlets are not blocked.
The cooker hood has switched off during operation	<ul style="list-style-type: none"> • The safety cut-out device has been tripped. • Turn off the hob and then wait for the device to re-set.

If after all these checks, the problem persists, contact your local Service Force Centre, quoting the model and serial number.

Please note that it will be necessary to provide proof of purchase for any in-guarantee service calls.

In-guarantee customers should ensure that the above checks have been made as the engineer will make a charge if the fault is not a mechanical or electrical breakdown.

SERVICE AND SPARE PARTS

If you require an engineer or wish to purchase spare parts contact your local Service Force Centre by telephoning:

08705 929929

Your telephone call will be routed to the Service Force Centre covering your postcode area.

For general enquires concerning your AEG appliance or for further information on AEG products, please contact our Customer Services Department at the address below or visit our website at www.aeg.co.uk

Customer Services Department
Major Appliances
AEG
Addington Way
Luton
Bedfordshire
LU4 9QQ
Tel: 08705 350 350 *

* calls to this number may be recorded for training purposes

GUARANTEE CONDITIONS

Standard Guarantee Conditions

We, AEG, undertake that if within 12 months of the date of the purchase this AEG built-in appliance or any part thereof is proved to be defective by reason only of faulty workmanship or materials, the company will, at our option, repair or replace the same FREE OF ANY CHARGE for labour, materials and carriage on condition that:

- The appliance has been correctly installed and used only on the electrical supply stated on the rating plate.
- The appliance has been used for normal domestic purposes only, and in accordance with the manufacturer's operating and maintenance instructions.
- The appliance has not been serviced, maintained, repaired, taken apart or tampered with by any person not authorised by us.
- All service work under this guarantee must be undertaken by an AEG Service Force Centre.
- Any appliances or defective parts replaced shall become the property of this company.

Home visits are made between 8.30am and 5.30pm Monday to Friday. Visits may be available outside these hours in which case a premium will be charged.

EXCLUSIONS

This Guarantee does not cover:

- Damage or calls resulting from transportation, improper use or neglect, the replacement of any light bulbs or removable parts of glass or plastic.
- Costs incurred for calls to put right appliances improperly installed or calls to appliances outside the United Kingdom.
- Appliances found to be in use within a commercial environment, plus those which are the subject of rental agreements.
- Products of AEG manufacture which were not marketed by AEG. This guarantee is in addition to your statutory and legal rights.

EUROPEAN GUARANTEE

If you move to another country within Europe then your guarantee moves with you to your new home subject to the following qualifications:

- The guarantee starts from the date you first purchased your product.
- The guarantee is for the same period and to the same extent for labour and parts as exists in the new country of use for this brand or range of products.
- The product is installed and used in accordance with our instructions and is only used domestically, i.e. a normal household.
- The product is installed taking into account regulations in your new country.

Before you move please contact your nearest Customer Care centre, listed below, to give them details of your new home. They will ensure that the local Service organisation is aware of your move and able to look after you and your appliance.

France	Senlis	+33 (0)3 44 62 29 99
Germany	Nurnberg	+49 (0)911 323 2600
Italy	Pordenone	+39 (0)01678 47053
Sweden	Stockholm	+46 (0)8 738 79 50
UK	Luton	+44 (0)8705 350 350

INSTALLATION INSTRUCTIONS



It is dangerous to alter the specifications or attempt to modify this product in any way.

Technical Information

DIMENSIONS

HEIGHT (CANOPY):	760 mm
HEIGHT (CHIMNEY):	300-300 mm
WIDTH (CANOPY):	898 mm
WIDTH (CHIMNEY):	300 mm
GROSS:	47 kg
NET:	37,4 kg

ELECTRICAL SUPPLY:

220-240 V (50 Hz)

POWER CONSUMPTION:

370 W

FAN MOTOR:

330 W

LAMP:

(2x20W) HALOGEN Ø 35 mm GUA

40 W

SUITABLE FOR INSTALLATION

ABOVE:

ELECTRIC HOB:

7 KW

GAS HOB:

10 KW

SLOT-IN GAS COOKER

13.5 KW

SLOT-IN ELECTRIC COOKER

12.4 KW



Note: CE Marking certifies that this appliance complies with the requirements laid down in EEC directive 89:336. (Electromagnetic compatibility) and subsequent modifications and Low Voltage directive 72/23/E.

ELECTRICAL CONNECTIONS



This appliance must be earthed

Electrical Requirements

Any permanent electrical installation must comply with the latest I.E.E. Regulations and local Electricity Board regulations. For your own safety this should be undertaken by a qualified electrician e.g. your local Electricity Board, or a contractor who is on the roll of the National Inspection Council for Electrical Installation Contracting (NICEIC).

Electrical Connection

Before connecting to the mains supply ensure that the mains voltage corresponds to the voltage on the rating plate inside the cooker hood.

Remove the grease filters (see paragraph Maintenance) being sure that the connector of the feeding cable is correctly inserted in the socket placed on the side of the fan.

This appliance is fitted with a 3 core mains cable and must be permanently connected to the electricity supply via a double-pole switch having 3mm minimum contact gap on each pole. A Switched Fuse Connection Unit to BS1363 Part 4, fitted with a 3 Amp fuse, is a recommended mains supply connection accessory to ensure compliance with the Safety Requirements applicable to fixed wiring instructions.

This appliance conforms to BS 800: 1988 and EEC Directive No. 78 308 regarding suppression of radio and television interference.

INSTALLING THE COOKER HOOD

Please ensure that when the appliance is installed it is easily accessible to an engineer in the event of a breakdown.



All installations must comply with the local authorities requirements for the discharge of exhaust air.

Incorrect installation may affect the safety of this cooker hood.

Installation Requirements



Before installation check the wall to which the cooker hood is to be fitted for electric cables, water pipes or gas.

The chimney hood must be installed according to the instructions suppliers below and by qualified and competent personnel to the relevant National Standards.

The cooker hood is designed to be fixed to a solid block or block wall over a cooking area. If not, suitable fixing must be used for other types of walls. The hood can be used in the extraction (ducted to the outside) or recirculation (internal recycling) mode.

The Installation work must be undertaken by a qualified and competent person. The manufacturer disclaims any responsibility to damages due to incorrect installation of the cooker hood or if the cooker hood is not installed in compliance with relevant regulations controlling this type of installation.

Unpacking

Before unpacking the cooker hood position the carton with the arrows pointing upwards as illustrated on the carton.

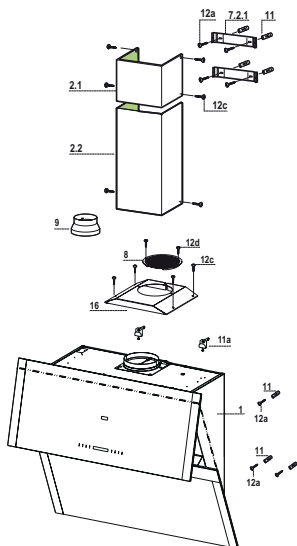
The canopy is supplied with the following components for installation:

Ref	Qty	Product Components
1	1	Cooker hood with control unit, lights, blower unit, filters
2.1	1	Upper chimney
2.2	1	Lower chimney
8	1	Air outlet grid
9	1	Reducer flange Ø 150-120
16	1	Cover for recycling version

Ref.	Q.ty	Installation components
7.2.1	2	Fixing brackets for upper chimney
11	7	Plugs
11a	2	Plugs SB 12/10
12a	7	Screws 4,2 x 44,4
12c	10	Screws 2,9 x 6,5
12e	2	Screws 2,9 x 9,5

Q.ty Documentation

1	Instruction booklet
---	---------------------

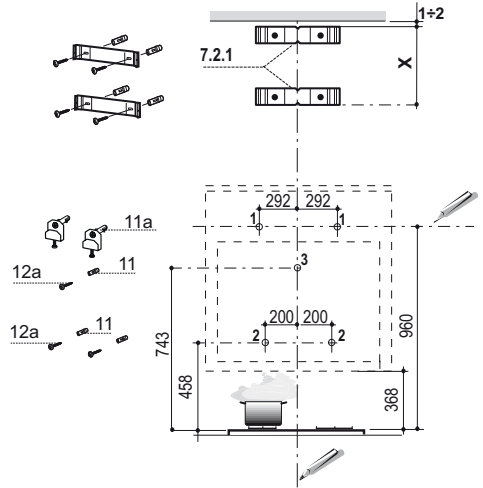


INSTALLATION INSTRUCTIONS

Wall drilling and bracket fixing

As a first step, proceed with the following drawings:

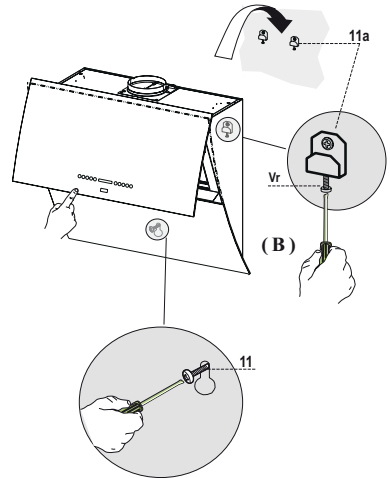
- a vertical line up to the ceiling or up to the upper limit, at the centre of the area in which the hood is to be fitted;
- a horizontal line at a minimum 960 mm above the cooker top.
- Mark a point (1) on the horizontal line, 292 mm to the right of the vertical reference line.
- Repeat this operation on the other side, checking that the two marks are levelled.
- Mark a reference point (2) as indicated at 200 mm from the vertical reference line and 458 mm above the cooker top.
- Repeat this operation on the other side, checking that the two marks are levelled.
- Mark a reference point (3) at 743 mm above the cooker top on the vertical reference line.
- Drill at the marked points (1), using a \varnothing 12 mm drill bit.
- Drill at the marked points (2) and (3), using a \varnothing 8 mm drill bit.
- Insert the bracket plugs **11a** into the holes (1) and tighten the screws.
- Insert plug **11** into holes (2) and (3).
- Place bracket **7.2.1** on the wall, about 1-2 mm from the ceiling or from the upper limit, aligning the centre (notch) with the vertical reference line.
- Mark the wall at the centres of the bracket holes.
- Place the bracket **7.2.1** on the wall at X mm below the first bracket (X = height of the upper chimney section), aligning the centre (notch) with the vertical line.
- Mark the wall at the centres of the bracket holes.
- Drill \varnothing 8 mm holes at all the marked centre points.
- Insert the wall plugs **11** in the holes.
- Fix the brackets using the **12a** screws (4,2 x 44,4) supplied with the hood.



INSTALLATION INSTRUCTIONS

Hood body mounting

- Firstly, it is necessary to adjust the two **Vr**-screws of the **11a**-brackets, at minimum **(B)**.
- Hang the hood body on the two brackets **11a**.
- Connect the hood to the mains supply by means of a bipolar switch with at least 3 mm contact gap.
- see Part **USE** to open the upper panel
- Remove the metal filters by using the handles
- In order to align the hood it is necessary to adjust the **Vr**-screws from inside the hood.
- Fasten the safety screw **11**.
- Fit again the metal filters into their seats and see Part **USE** to close the upper panel.
- Disconnect the hood from the mains supply.



Attention: If any barrier occurs in its way during the panel opening or closing, the upper panel stops for 1 sec and starts again the other way round. If within 5 sec the panel does not open or close, the motor stops. Press the key once again.

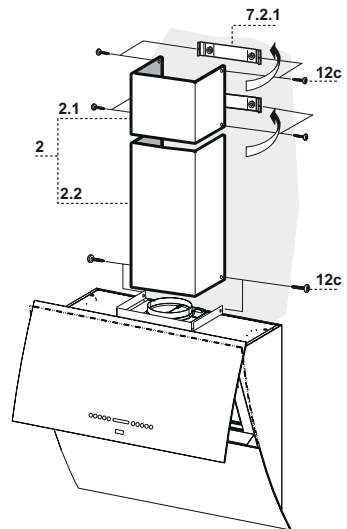
Chimney assembly

Upper exhaust Chimney

- Slightly widen the two sides of the upper chimney and hook them behind the brackets **7.2.1**, making sure that they are well seated.
- Secure the sides to the brackets using the 4 screws **12c** (2,9 x 9,5) supplied.

Lower exhaust Chimney

- Slightly widen the two sides of the chimney and hook them between the upper chimney and the wall, making sure that they are well seated.
- Fix the lower part laterally to the hood body using the 2 screws **12c** (2,9 x 9,5) supplied.

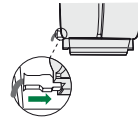


INSTALLATION INSTRUCTIONS




Electrical connection and working test:

- Connect the hood to the mains supply.
- Open the upper panel by pressing the **A**-key (See Part "USE") for at least 2 seconds.
- Remove the metal filters (See Part "MAINTENANCE") and make sure that the connector piece of the supply cable is correctly inside the hood socket.





The symbol  on the product or on its packaging indicates that this product may not be treated as household waste. Instead it shall be handed over to the applicable collection point for the recycling of electrical and electronic equipment. By ensuring this product is disposed of correctly, you will help prevent potential negative consequences for the environment and human health, which could otherwise be caused by inappropriate waste handling of this product. For more detailed information about recycling of this product, please contact your local city office, your household waste disposal service or the shop where you purchased the product.